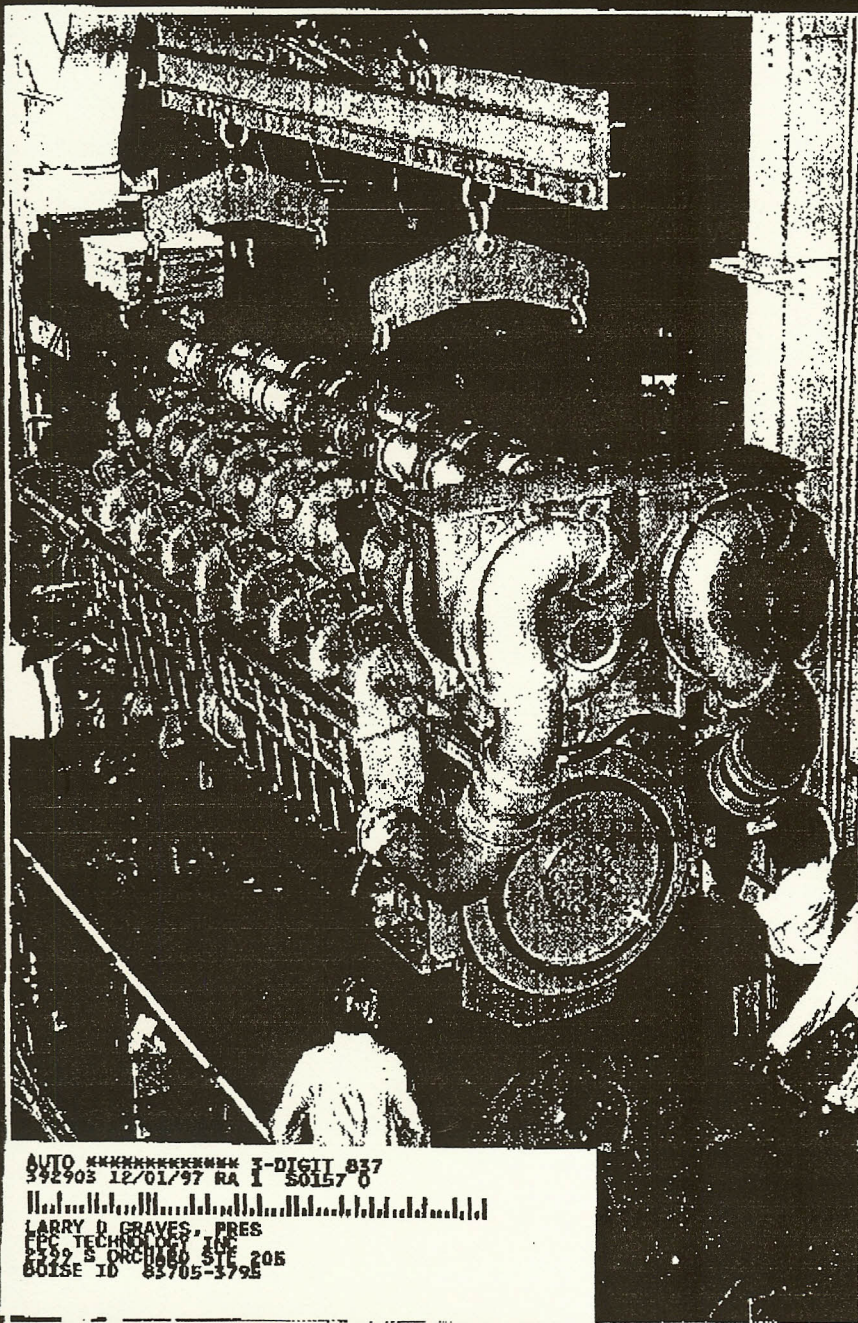


RailwayAge

June 1997

Serving railways and rail transit for 121 years



**SUPPLIER R&D:
IN LEAN
TIMES,
A STRONG
COMMITMENT**

**FOR WC, PAPER
PROFITS MEAN CASH—
AND LOTS OF IT**

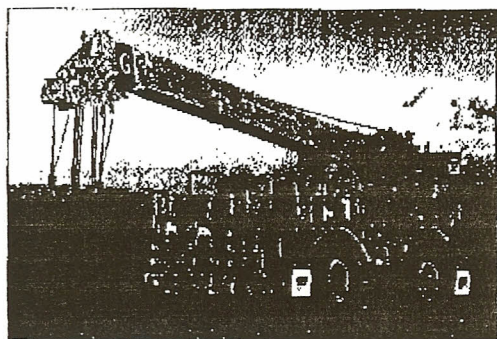
**NYCT's 1,080
NEW CARS: A
HIGH-TECH RIDE
INTO THE
21ST CENTURY**

**1997 GUIDE
TO EQUIPMENT
LEASING**

AUTO ***** I-DIGIT 837
392903 12/01/97 RA 1 50157 0
|||||
LARRY D. GRAVES, PRES
EPC TECHNICAL SVCS
5559 S OCHILDEE AVE 205
BOISE ID 83705-3795

Equipment

Burlington Northern and Santa Fe: Has added 120 aluminum Johnstown America BethGons® to its coal fleet. These cars, equipped with electro-pneumatic brakes, have light weight of 41,750 pounds and payload capacity of 244,250 pounds for gross weight on rail of 286,000 pounds. BNSF will operate them on its Northern Corridor, moving Powder River Basin coal to Minnesota.



RTR58D features include hi-rail and guide wheel systems that allow it to travel on rails under its own power.

BNSF is acquiring two RTR58D cranes from Grove Crane and T.C. Johnson Co. for use in cwr installation, bringing its total number of RTR58-series cranes to seven. Features include hi-rail and guide wheel systems (see photo).

Canadian National: Signed an agreement with GE Transportation Systems under which GE will maintain and repair 118 of CN's Dash 8 and Dash 9 locomotives. The work will be performed at CN's Symington facility in Winnipeg, Man.

Conrail: Is taking delivery of 200 new covered Coil-SHIELD cars from Thrall, augmenting its current fleet of 700 such cars. The new cars are valued at \$13 million. The cars have a single 42-foot-long trough that is fully insulated, polymer-coated securement bars, and a single fully-insulated hood. Each car can handle coils of 30 to 84 inches in diameter, up to a load capacity of 222,000 pounds.

CSX Transportation: Ordered 200 Apollolite II Crossing Light kits from Quest Corp. This will complete installation of ditch lights on the entire CSXT locomotive fleet.

Long Island Rail Road: Awarded a \$2.36 million contract to Safetran Systems Corp. for three main/office houses, 12 outlying houses, two instrument cases, and 13 snowmelter control cases for upgrading the Divide Interlocking plant at Hicksville, N.Y.

Union Pacific: Renewed a two-year contract with MotivePower Industries subsidiary Motor Coils Manufacturing for supply of traction motors, gears, and related components. MPI said the value of the contract is estimated at more than \$50 million.

Facilities

Montana Rail Link: Has ordered FPC Catalyst from FPC Technology, Inc., to begin treatment of its fuel system. The order followed a Carbon Mass Balance test on four MRL SD9 locomotives that produced a fuel consumption reduction average of 7.7% and smoke reduction averaging 26.9%. The supplier claims that fuel savings more than pay for the cost of the catalyst, and maintenance savings can exceed fuel savings.

Southern California Regional Rail Authority: Awarded an additional \$3.7 million in funding to J. L. Patterson & Associates for Metrolink trackwork design and construction management services. This brings the total value of the contract to \$10.3 million.

WWW.TRAINTRACK.COM

Train Track Computer Systems, Inc. • 875 W. 10th Street • Hayward, CA 94608
TEL: 510-885-0000 • FAX: 510-885-2000